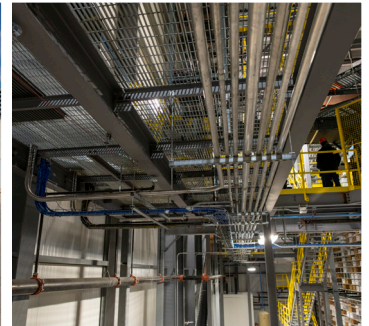


INTERSTATES

CREEKSTONE FARMS REFRIGERATED DISTRIBUTION CENTER ARKANSAS CITY, KS

Commercial: Electrical | (\$1 Million - \$5 Million)



Size of Project:
41,000 sq ft



Length of Project:
17 Months

TYPE OF CONSTRUCTION

Interstates provided a complete design-build electrical package for Creekstone Farms refrigerated distribution center located adjacent to their current meat processing facility in Arkansas City, KS.

BUILDING FEATURES

The distribution warehouse is 41,000 square feet and consists of a 35,000 square foot main floor footprint and a 6,000 square foot mezzanine area. The project included electrical construction, power engineering, controls engineering, network design, instrumentation procurement and installation, controls design, checkout of hardware and VFDs, commissioning support, control panels, motor control panels, PLC control panels and HMIs. Labor hours of the project totaled 20,849 and included 558 devices installed, 729 devices wired, 270 light fixtures, 189,000 feet of wire and 31,300 feet of aluminum conduit.